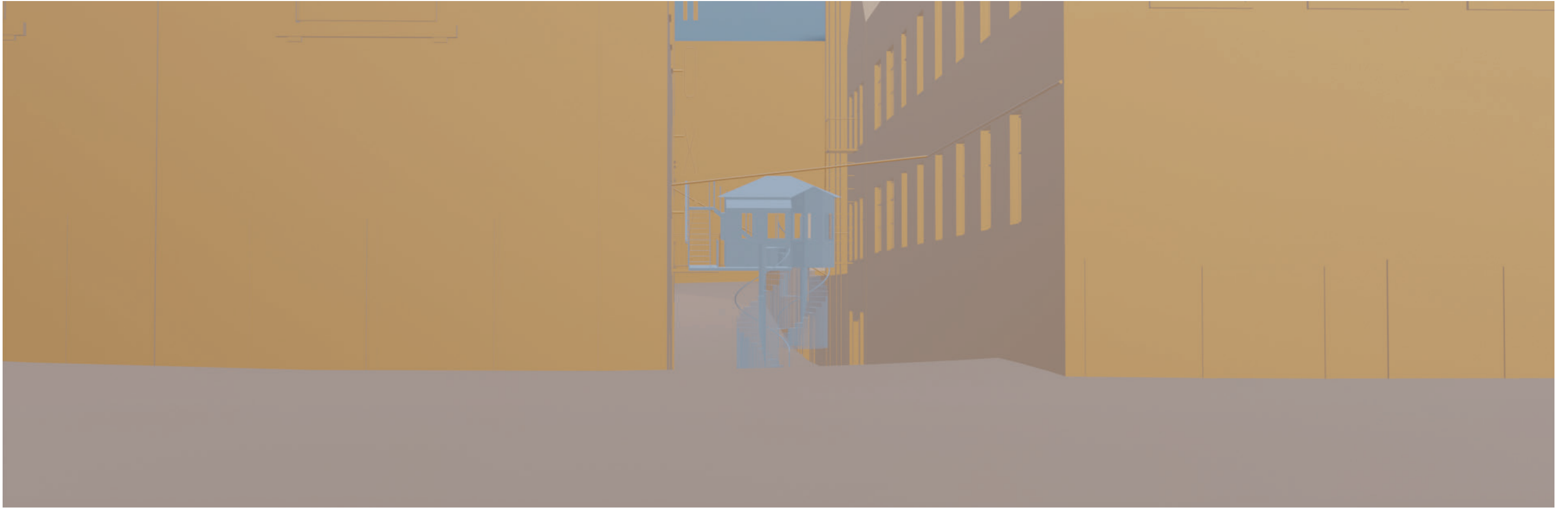




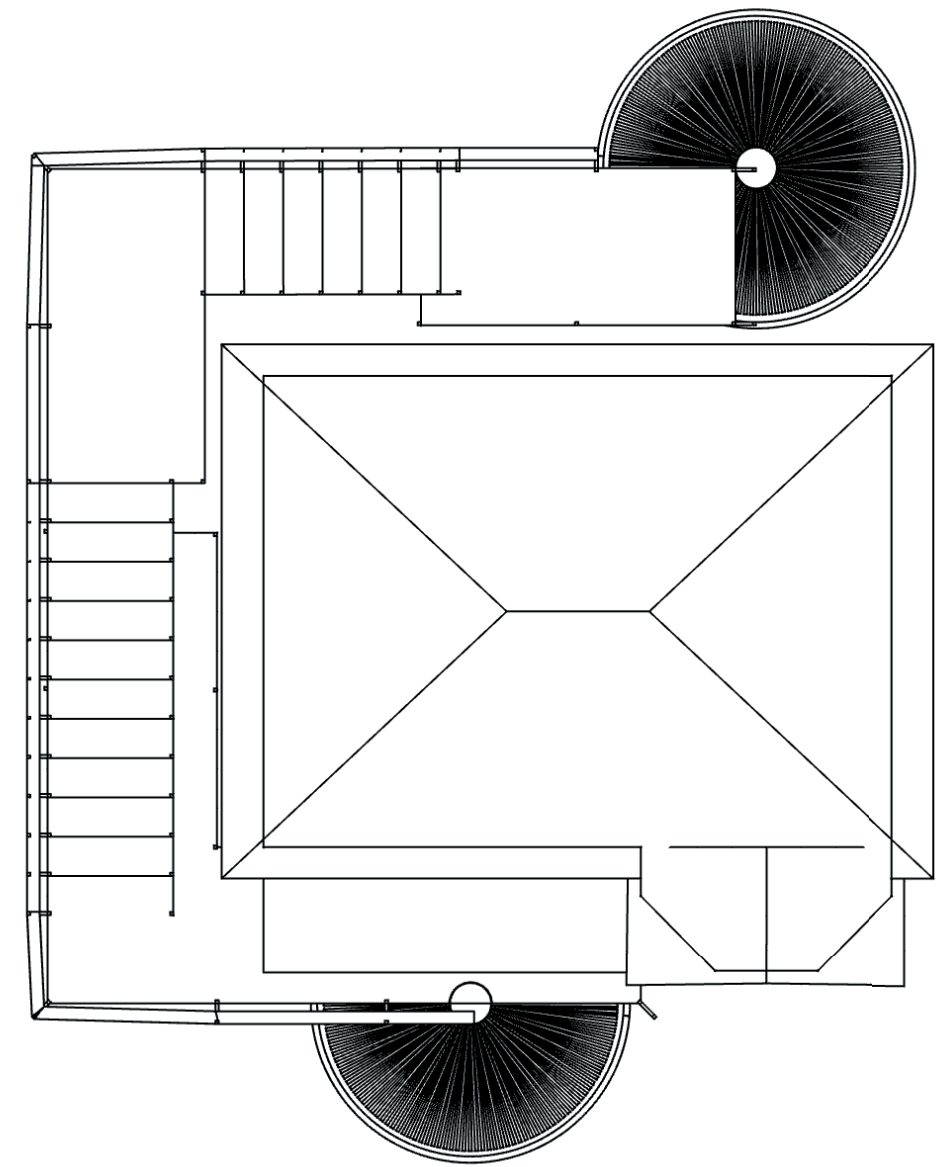
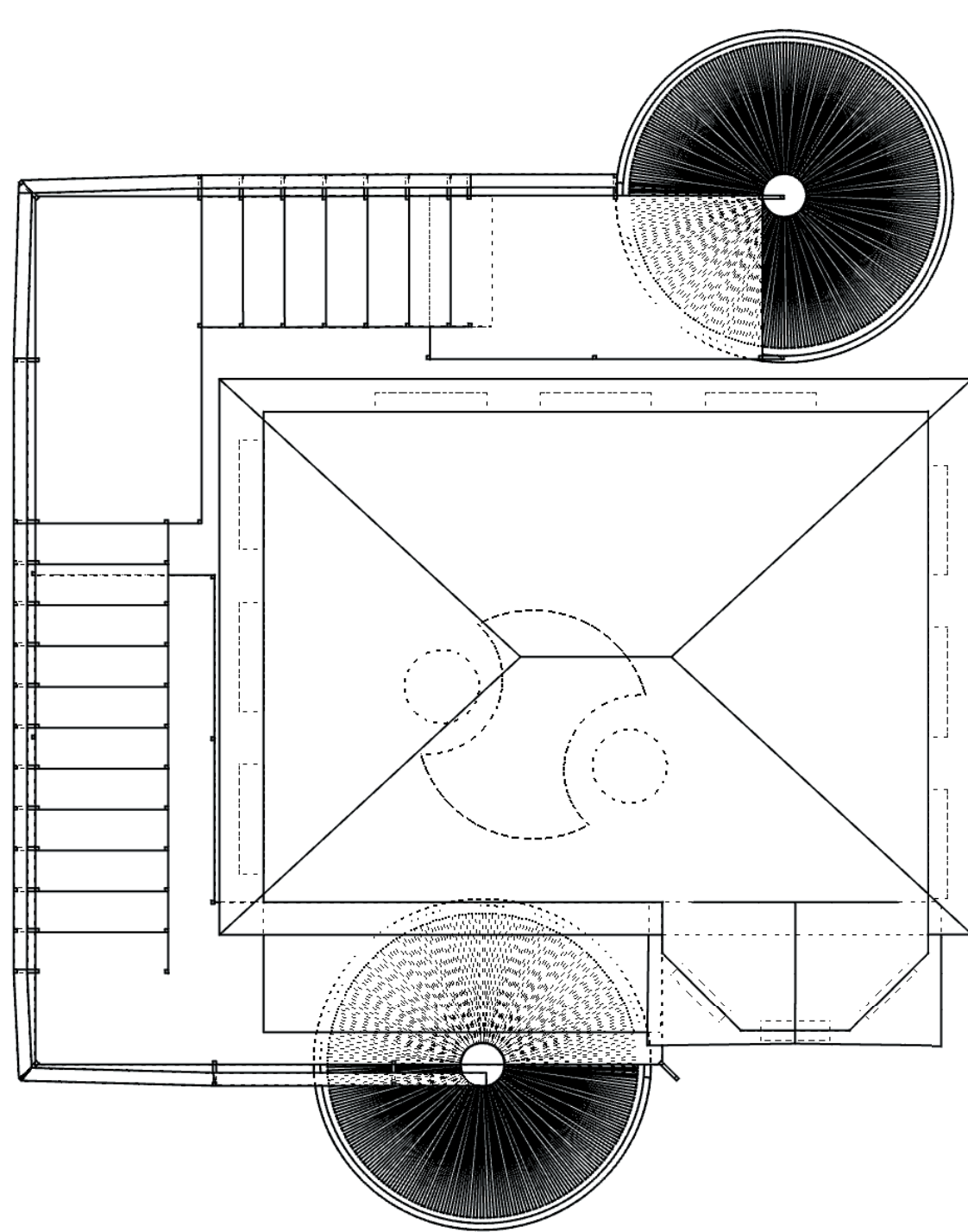
Perspective View from Fort St



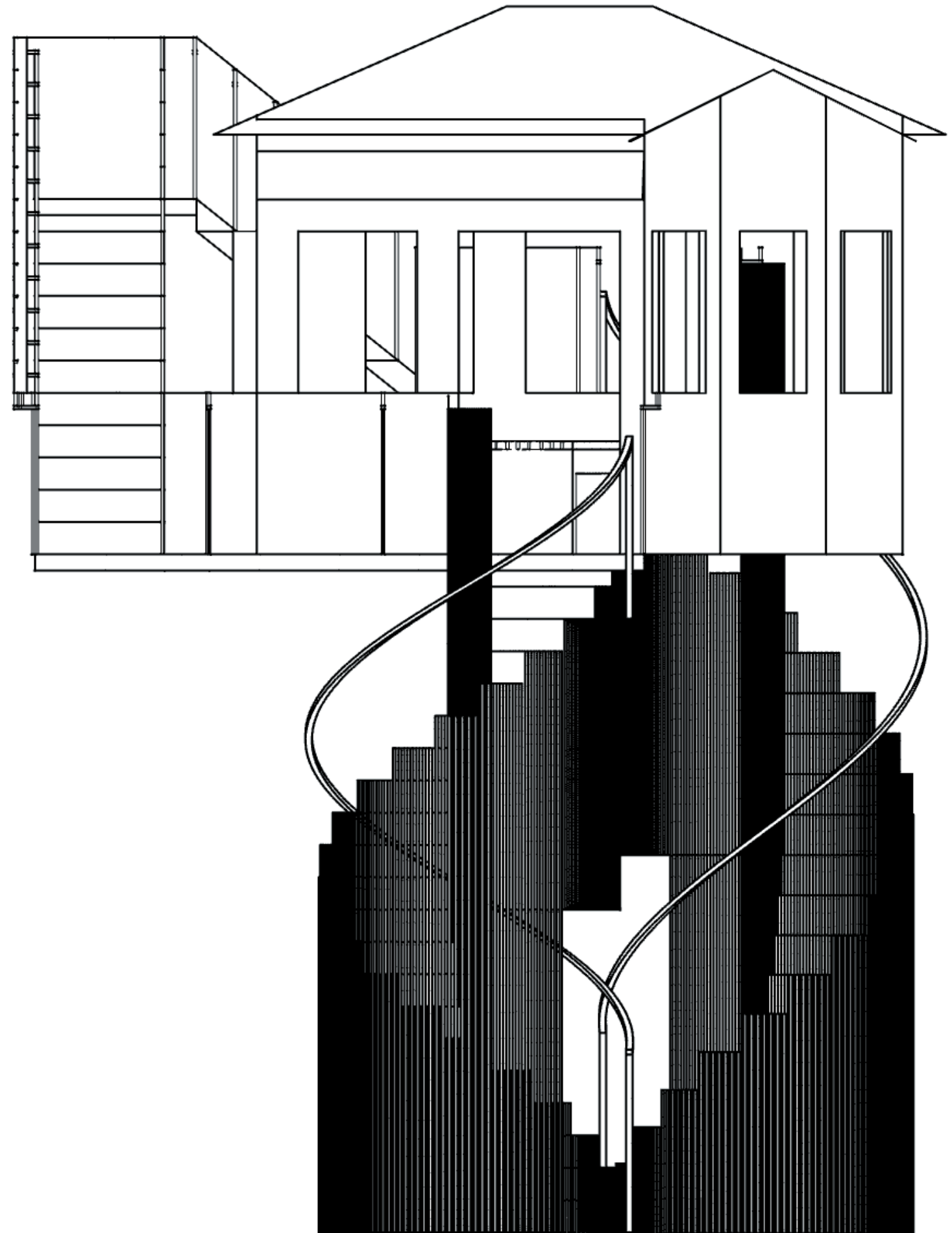
Wide View from Fort Lane

## *Statement*

Many people experience urban loneliness when living in big cities. As a spatial designer, I am exploring how I can intervene in an urban environment, specifically the site of Fort lane in Auckland, in such a way that encourages young adults to redefine their communities, becoming more neighborly. To challenge them on what your ‘private life’ life means to go beyond observing their neighbor through their window or hearing them through a wall to crossing the threshold into a neighbor’s life through the act of sharing a meal. To not just observe their neighbor but know their neighbor.



Floor Plan



Installation Elevation

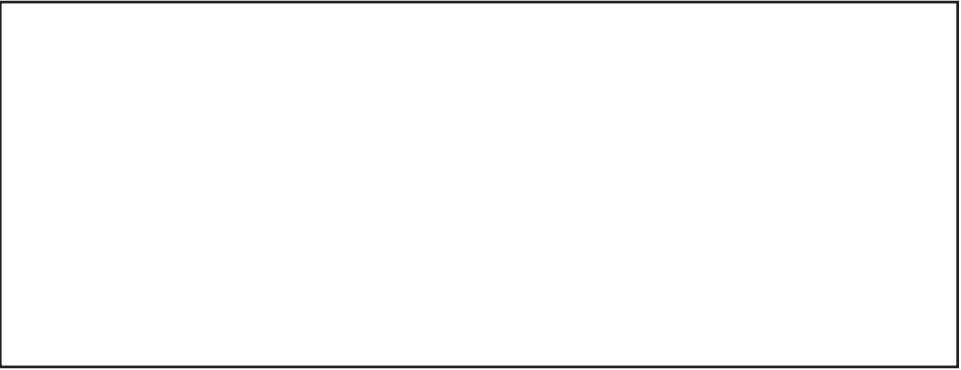
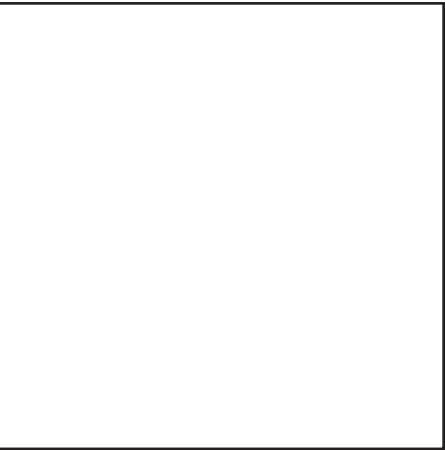
Elevations/ sections:  
lane  
- front  
- Side



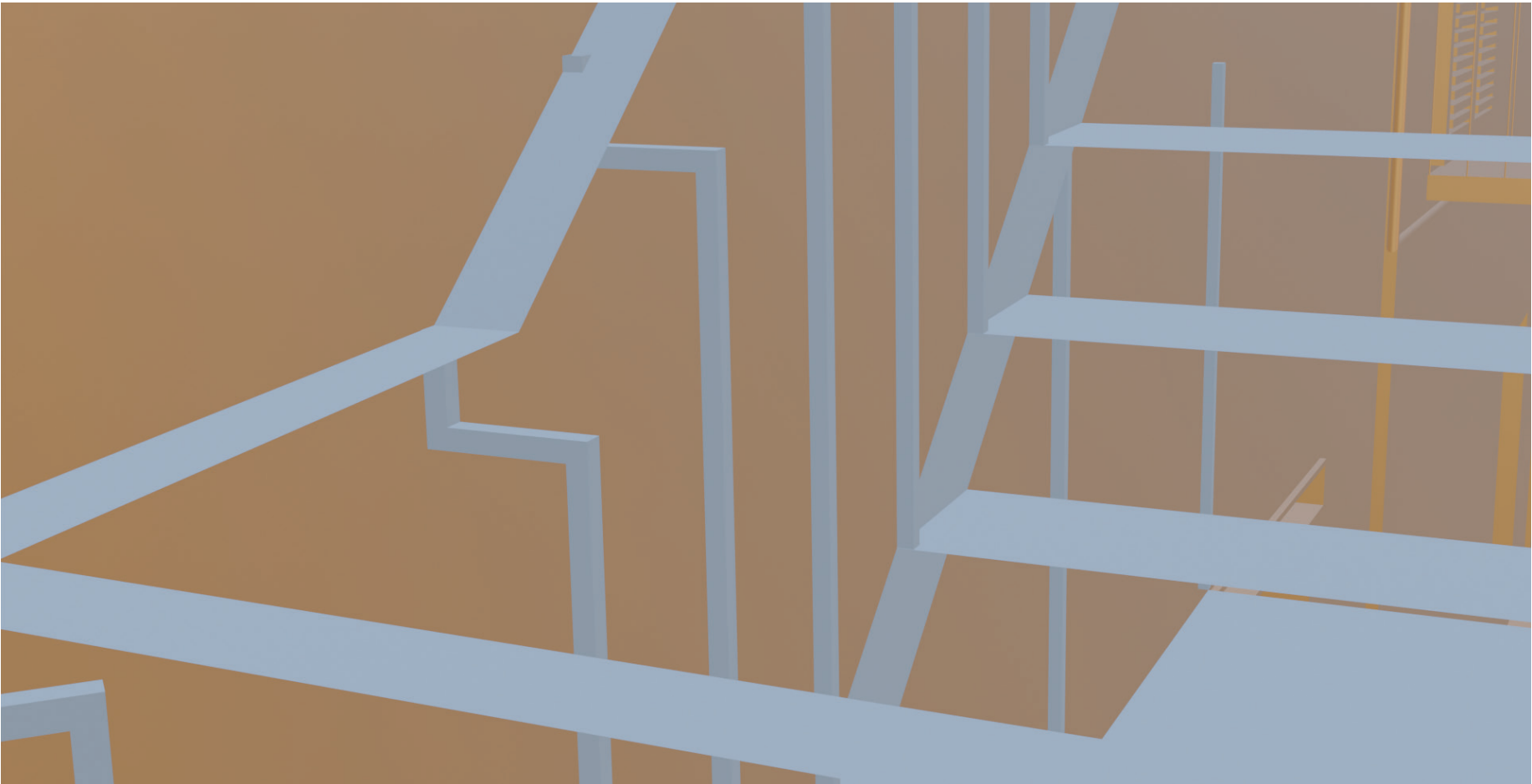
Stair Detail



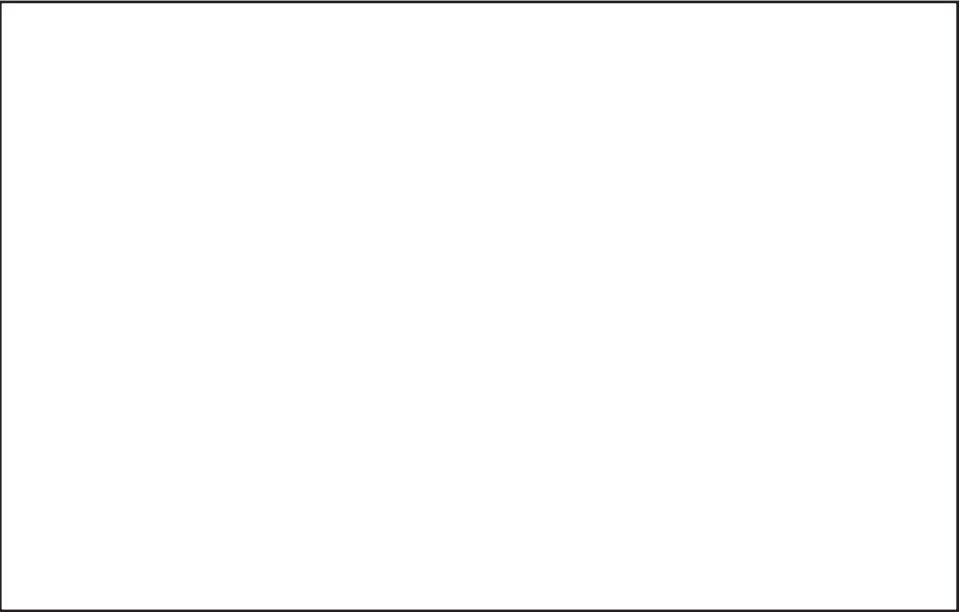
Materials



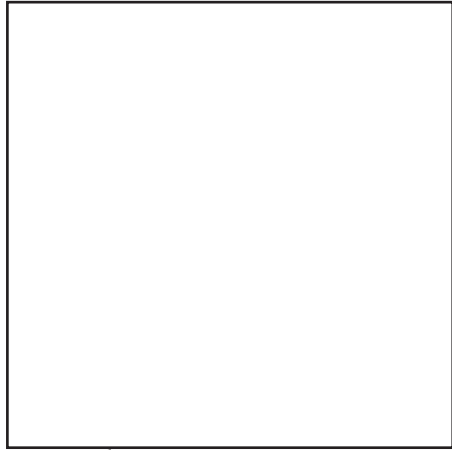
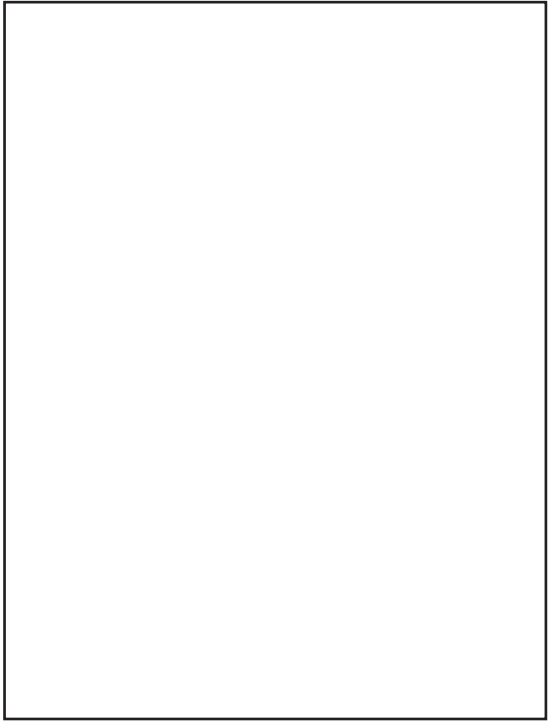
Stair Case Construction Detail



Faux Fire Escape Detail



Faux Fire Escape Construction Detail



Materials

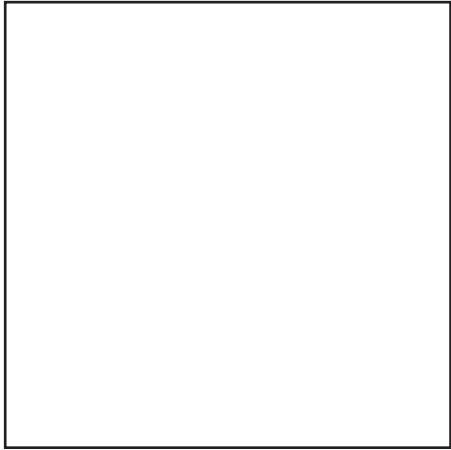
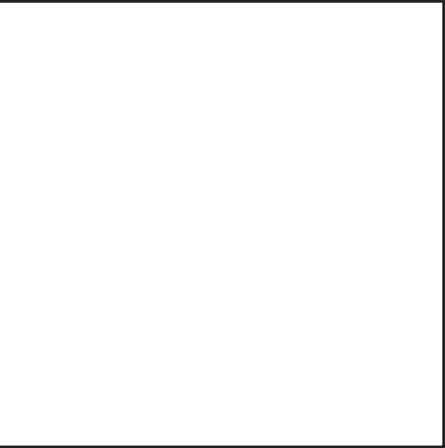
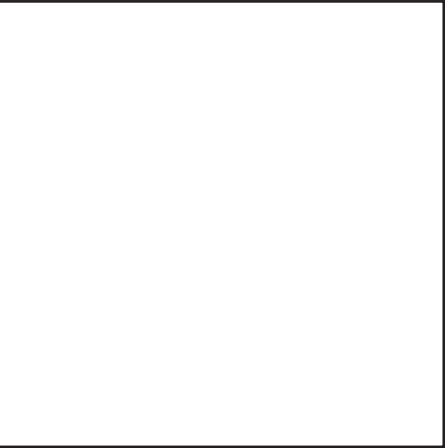


Table and Chairs Construction Detail

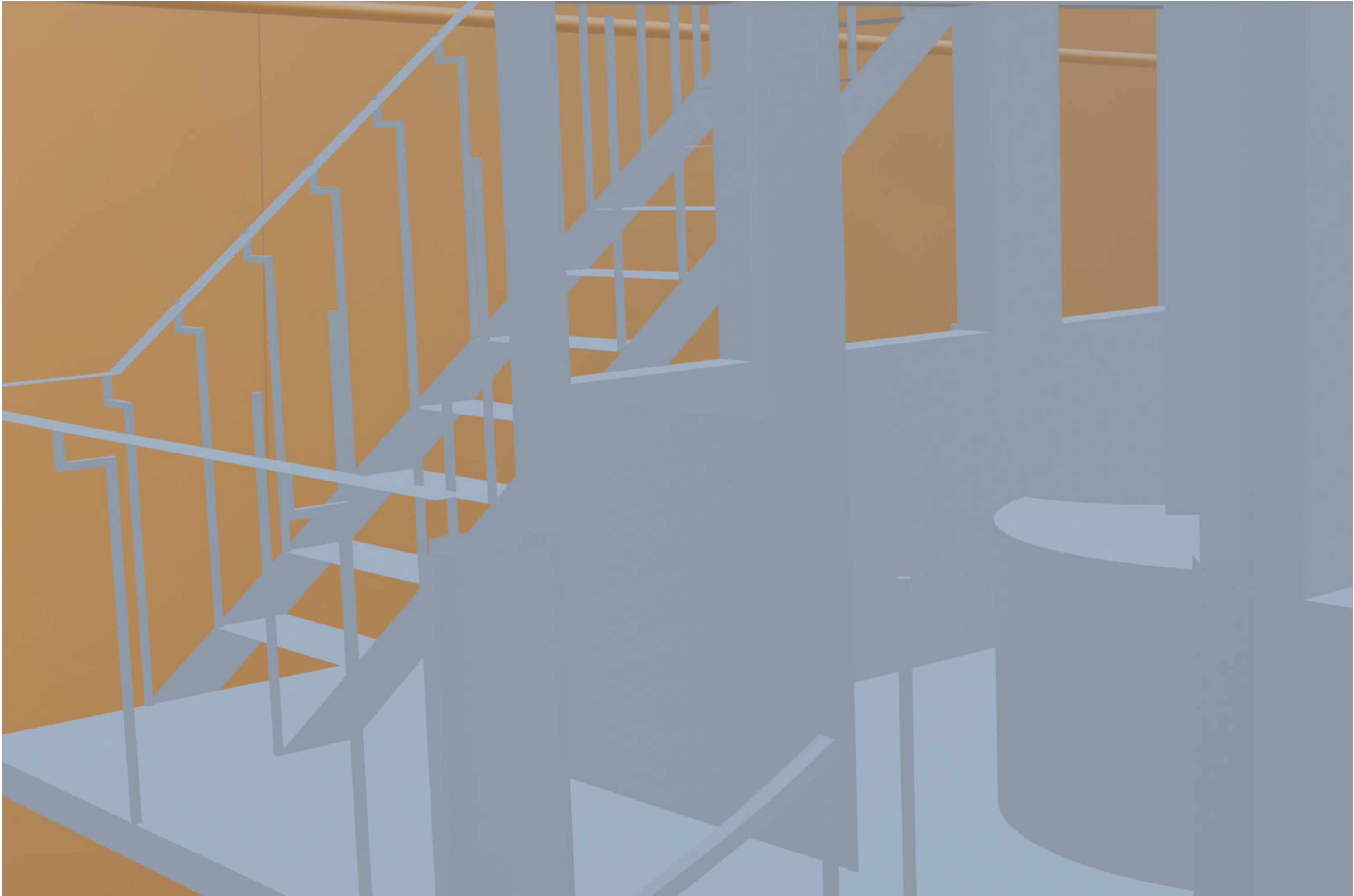
Detailing - materials, construction etc  
- house - how its supported  
- faux firescape - Exploded axonometric diagram





Materials





Perspective View

